

LYON



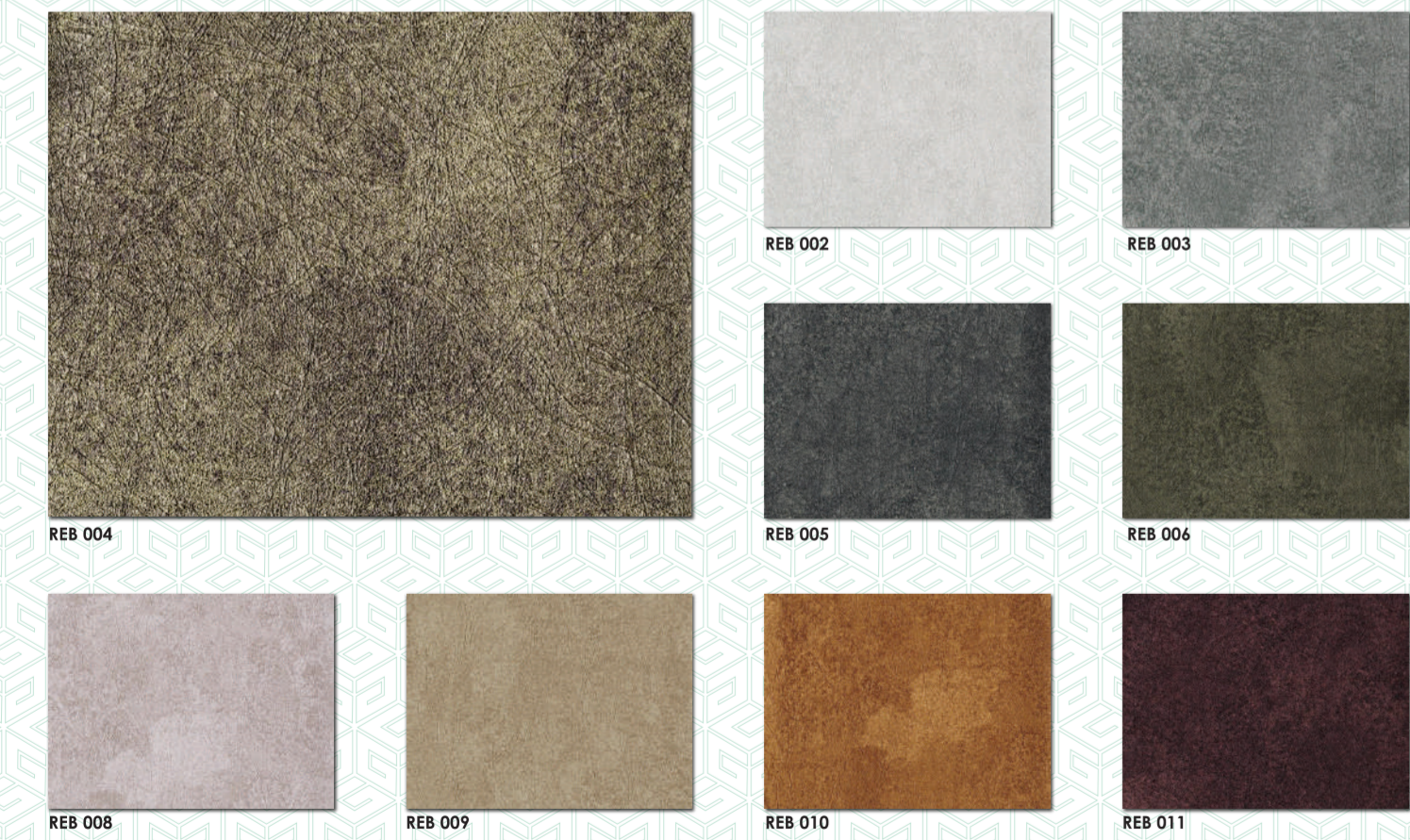
MATRIX



ROUGH CONCRETE



REBUS



MARQUETRY



TWEEL



VINYL COLLECTION 2025



Technical Specifications



	15oz	18oz	20oz
TOTAL WEIGHT (g/m2)	350	400	460
VINYL WEIGHT (g/m2)	260	310	460
SUBSTRATE WEIGHT (g/m2)	90	90	60
TENSILE STRENGTH (N/cm) MD	40	40	80
TD	30	30	60
TEAR STRENGTH nM (average)	4500	4500	8500
LIGHT FAST	Excellent Light Fastness BS EN ISO 105-B02 7/8		
ROLL SIZE	130x 30m - cut lengths available		
SPECIFICATION	Conforms to requirements of BS EN 15102, BS EN 259 and WA - Quality Standard W-101.		

FIRE RATED (15oz)
Class A ASTM E-84 Tunnel Test.

Light Reflective Value (LRV)
Available on request.
In architecture, light reflectance value, is a Measure of visible and usable light that is reflected from a surface when illuminated by a light source.

Stain/Chemical Resistance:
Pass ASTM D-1308-1987 Federal Spot Test. Resistant to temporary staining of oils, fats, mild acids and alkalis.

Quality Assurance:
Our management systems and production procedures comply with ISO 9001:2015, the internationally recognised Quality Standard.

Maintenance:
Fully washable and in most cases products can be scrubbed repeatedly to remove any marks without damaging the product itself. Also able to withstand the use of chlorine releasing agent solutions.

Warranty:
Newmor offers a five-year warranty against manufacturing defects. Full details available on application.

Product Warranty:
Newmor Manufacturer, warrants that for a period of five from the installation of its commercial wallcoverings, they shall not separate from their backings or support the growth of mildew when wallcoverings are installed properly onto a sound surface, adequately maintained and used under normal conditions. The warranty is not assignable and extends only to purchases who are the owners of wallcoverings at the time of installation. The manufacturer will supply replacement wallcoverings free of charge if any of its wallcoverings fail to conform to this warranty.



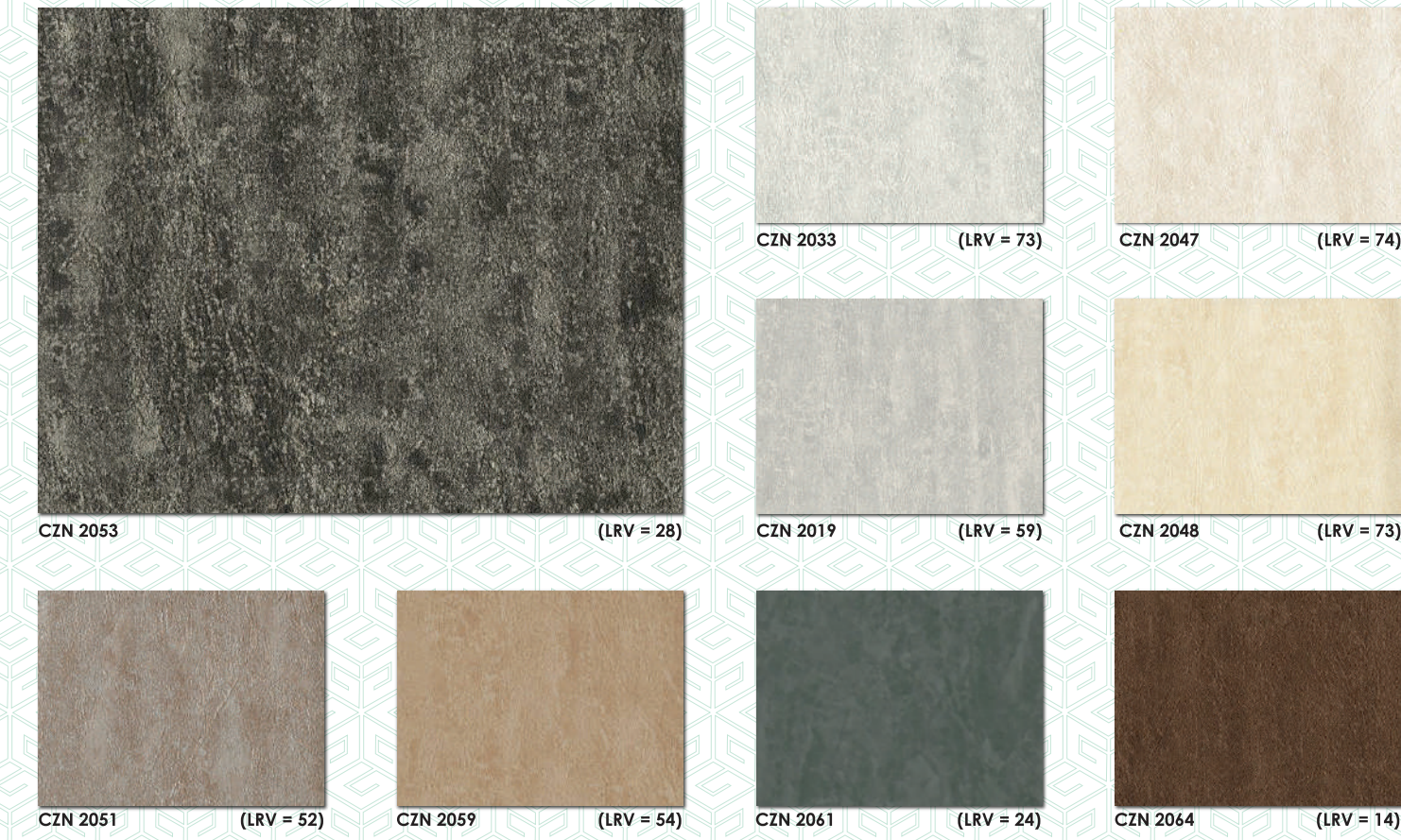
P.O.Box 20923, AJMAN, UAE | +971-6-7436888 | +971-6-7436903 | info@gfiuae.com | www.gfiuae.com

Follow us on: [Social media icons]

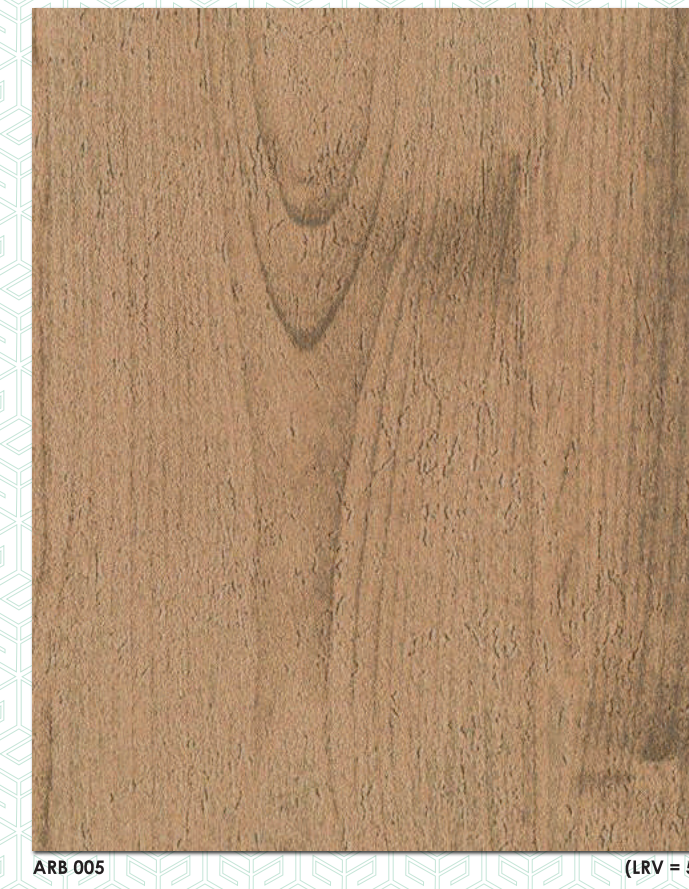
SHORELINE



CEZANNE



ARBOUR



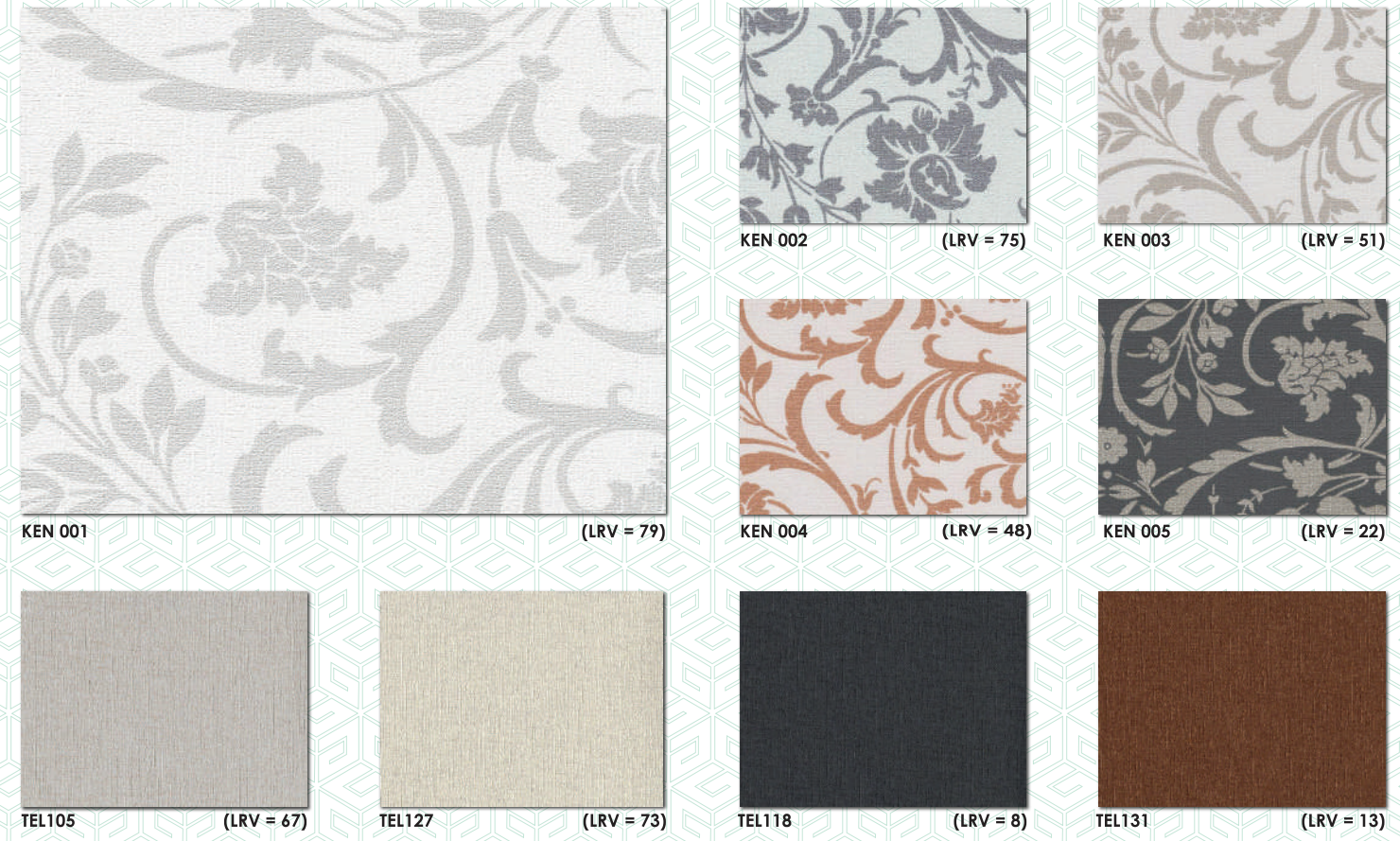
ZENITH



KENSINGTON TELA II



HARPER



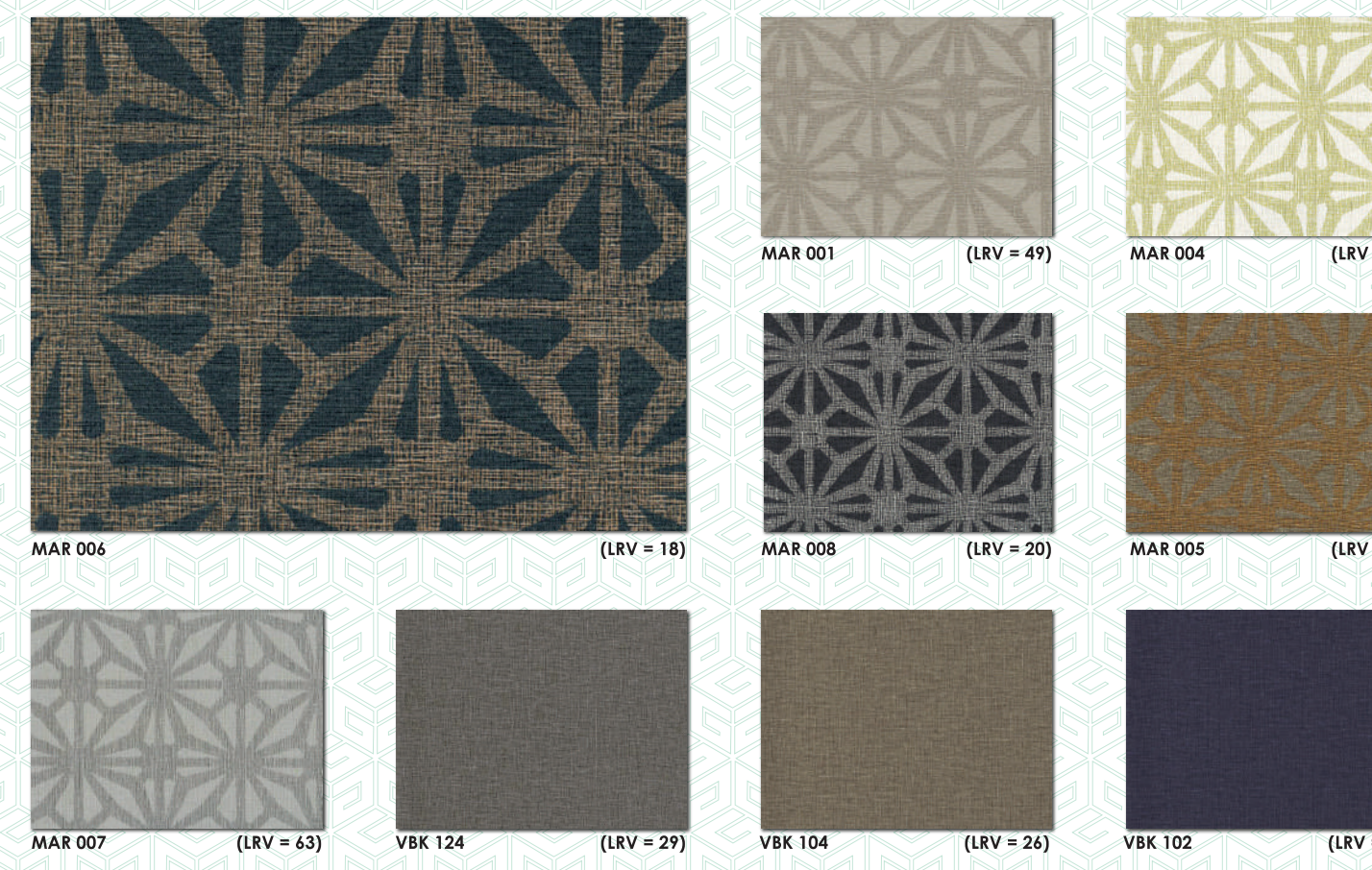
HERRINGBONE



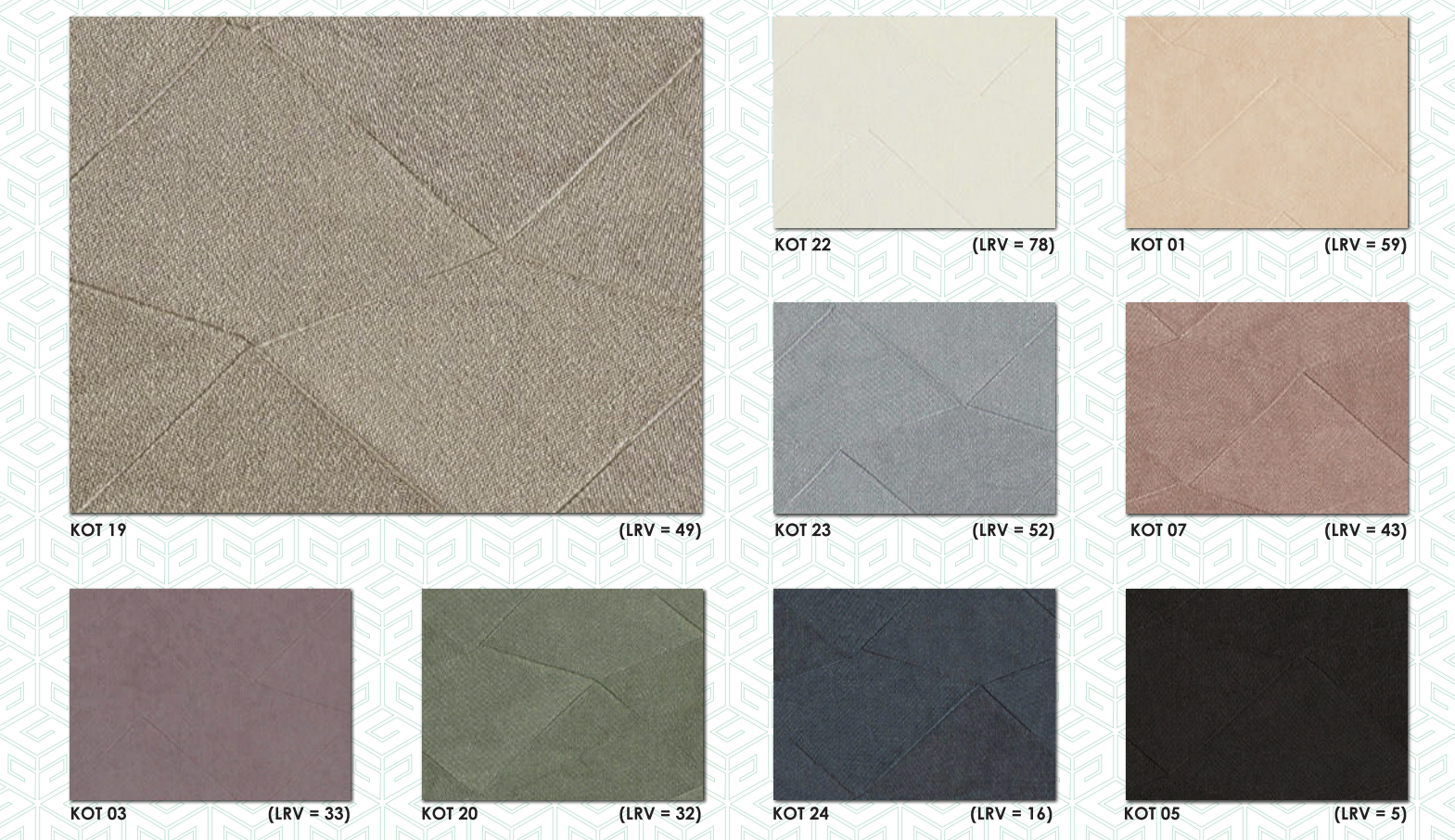
MARRAKESH/BARK



KOTA SILK



RAFFIA



RAFFIA

