

# VINYL COLLECTION 2025

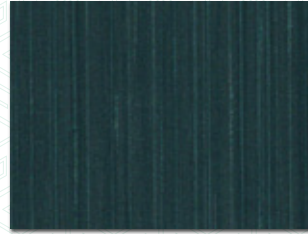


**HUFCOR**<sup>™</sup>  
*shaping your experience*

# LYON



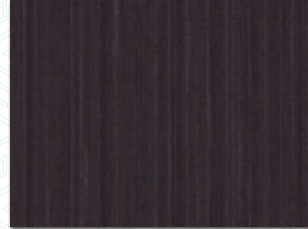
LY 126 (LRV = 34)



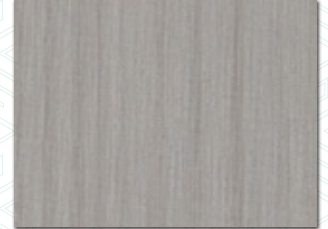
LY 110 (LRV = 11)



LY 117 (LRV = 41)



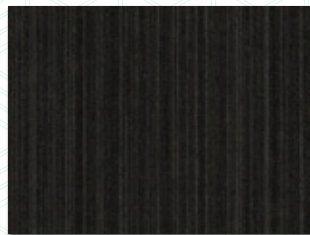
LY 111 (LRV = 12)



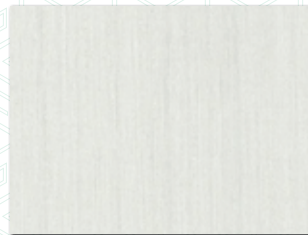
LY 128 (LRV = 47)



LY 113 (LRV = 53)



LY 120 (LRV = 5)



LY 125 (LRV = 77)

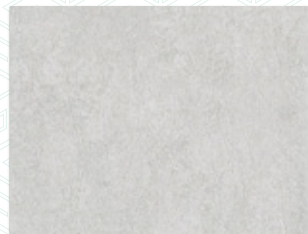


LY 133 (LRV = 57)

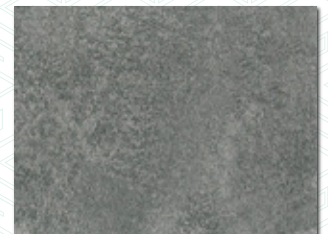
# REBUS



REB 004



REB 002



REB 003



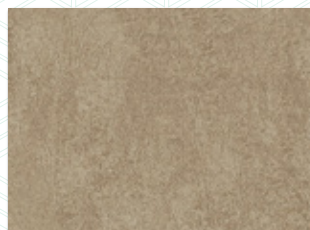
REB 005



REB 006



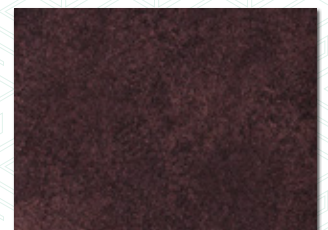
REB 008



REB 009



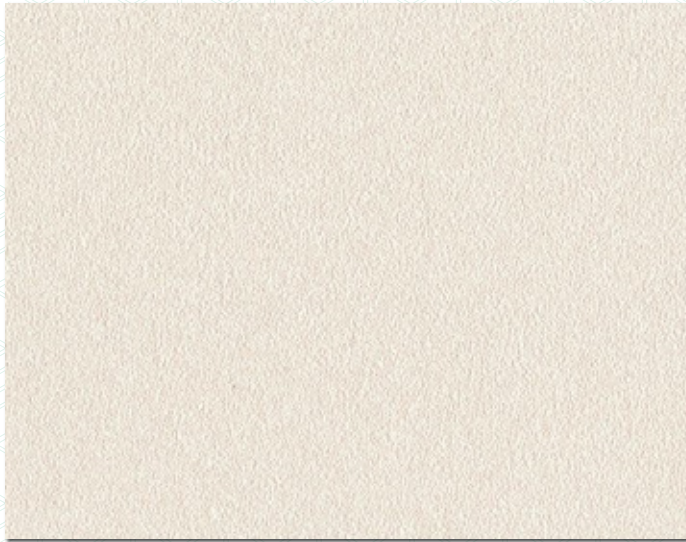
REB 010



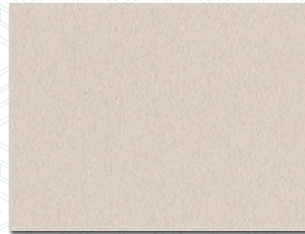
REB 011



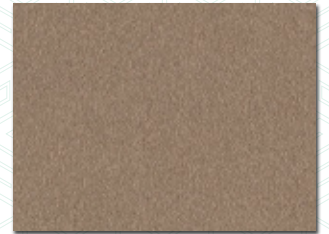
# MATRIX



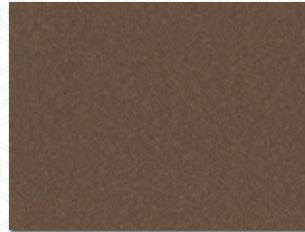
MX 0103



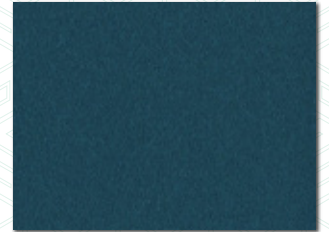
MX 0202



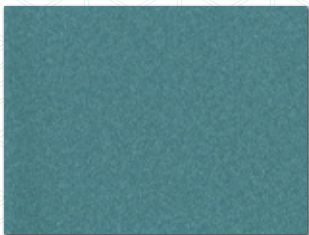
MX 2002



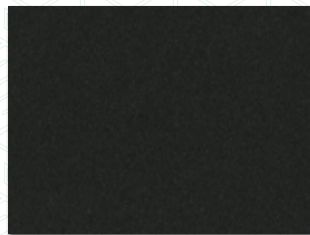
MX 2011



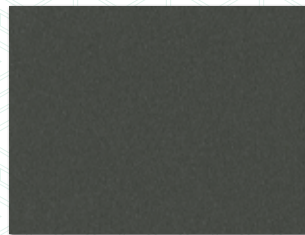
MX 1211



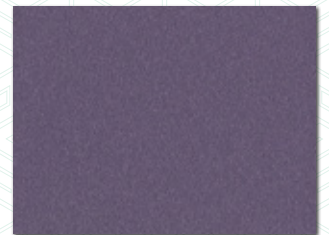
MX 1309



MX 1511



MX 2021



MX 2013

# MARQUETRY



MARQ 001

(LRV = 20)



MARQ 002

(LRV = 68)



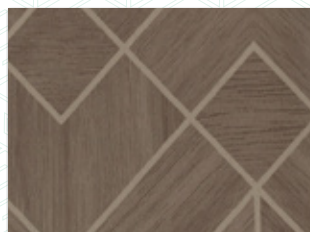
MARQ 003

(LRV = 62)



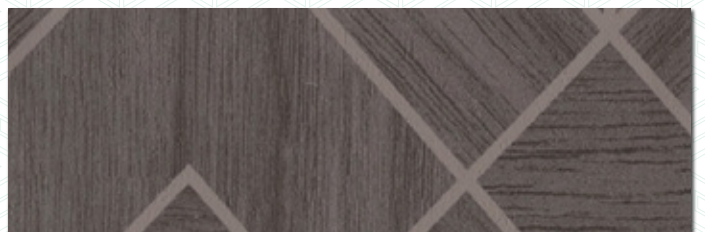
MARQ 004

(LRV = 48)



MARQ 005

(LRV = 20)



MARQ 006

(LRV = 20)



# ROUGH CONCRETE



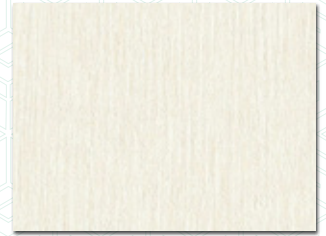
RCT 002

(LRV = 39)



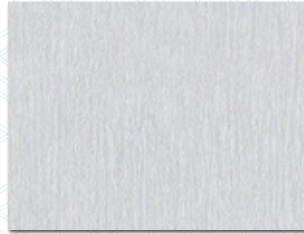
RCT 005

(LRV = 84)



RCT 009

(LRV = 78)



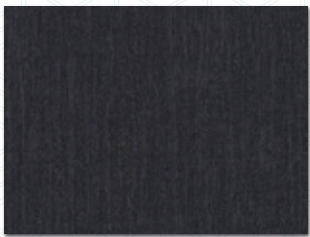
RCT 001

(LRV = 66)



RCT 014

(LRV = 50)



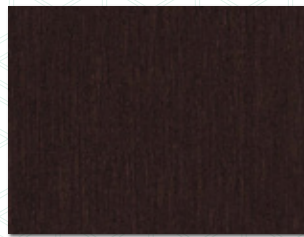
RCT 004

(LRV = 13)



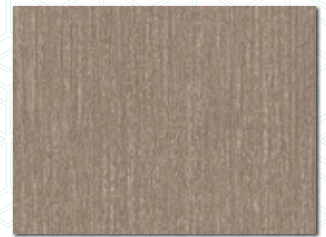
RCT 007

(LRV = 50)



RCT 016

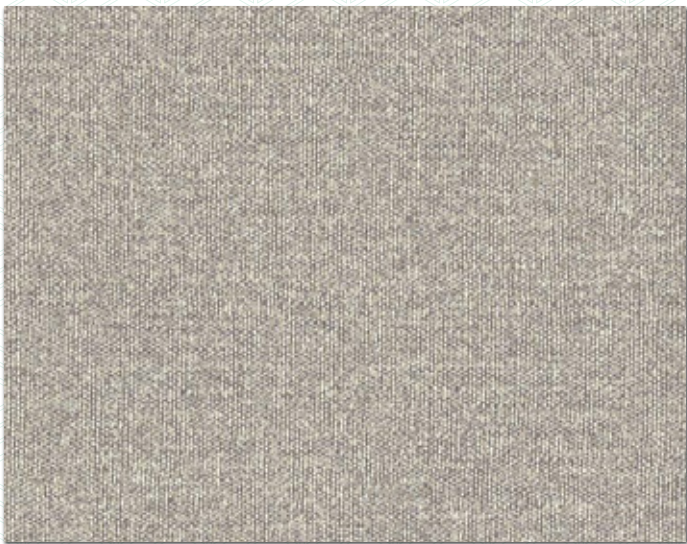
(LRV = 09)



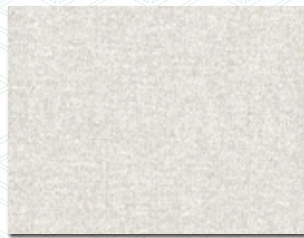
RCT 015

(LRV = 35)

# TWEEL



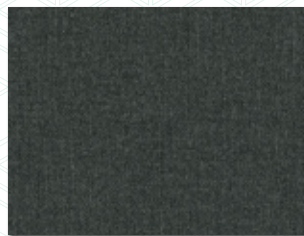
TWE 006



TWE 001



TWE 003



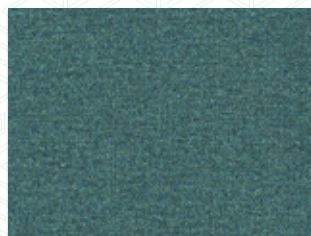
TWE 005



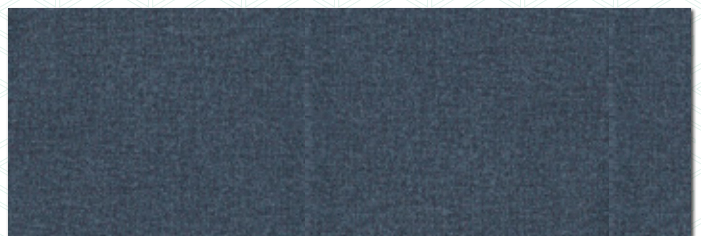
TWE 004



TWE 007



TWE 008



TWE 009



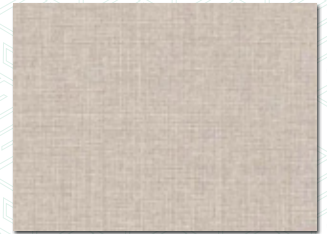
# SHORELINE



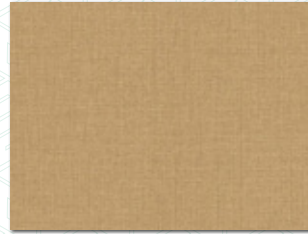
SHO 12 (LRV = 25)



SHO 02 (LRV = 68)



SHO 09 (LRV = 54)



SHO 04 (LRV = 61)



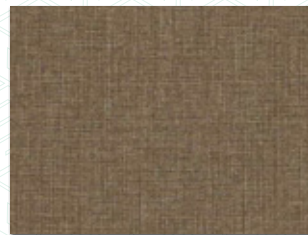
SHO 18 (LRV = 63)



SHO 10 (LRV = 42)



SHO 07 (LRV = 39)



SHO 17 (LRV = 18)

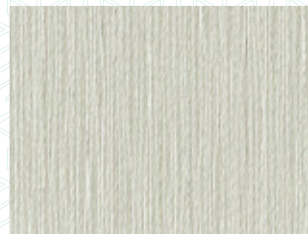


SHO 03 (LRV = 11)

# HARPER



HPR 020 (LRV = 24)



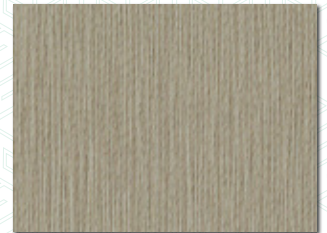
HPR 018 (LRV = 60)



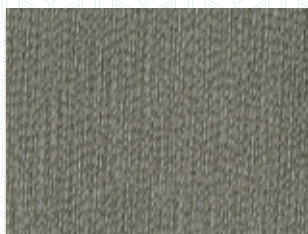
HPR 002 (LRV = 68)



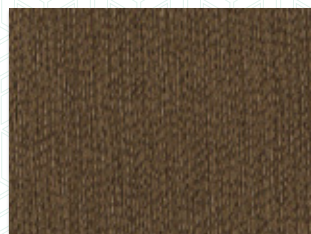
HPR 019 (LRV = 52)



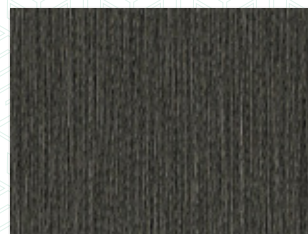
HPR 008 (LRV = 34)



HPR 014 (LRV = 20)



HPR 009 (LRV = 21)



HPR 021 (LRV = 11)



HPR 011 (LRV = 10)



# CEZANNE



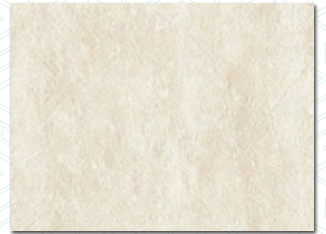
CZN 2053

(LRV = 28)



CZN 2033

(LRV = 73)



CZN 2047

(LRV = 74)



CZN 2019

(LRV = 59)



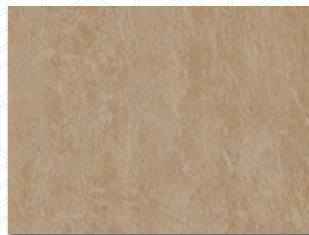
CZN 2048

(LRV = 73)



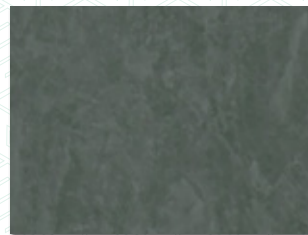
CZN 2051

(LRV = 52)



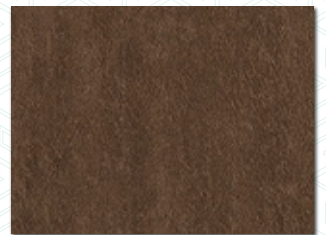
CZN 2059

(LRV = 54)



CZN 2061

(LRV = 24)



CZN 2064

(LRV = 14)

# HERRINGBONE



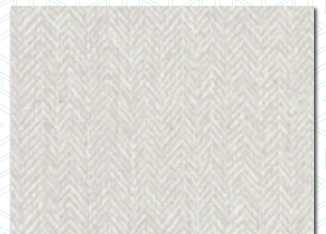
HRB 115

(LRV = 23)



HRB 109

(LRV = 52)



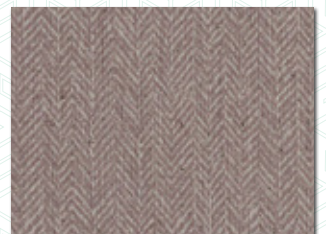
HRB 113

(LRV = 66)



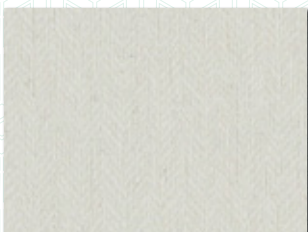
HRB 110

(LRV = 49)



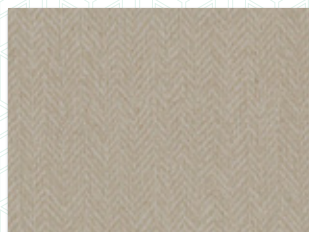
HRB 111

(LRV = 32)



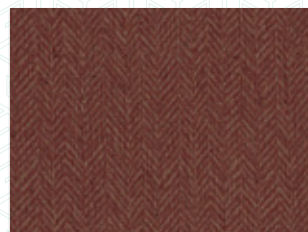
HRB 101

(LRV = 69)



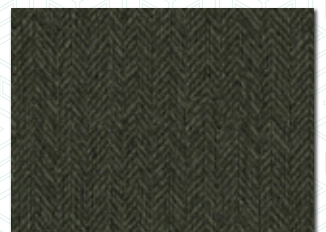
HRB 106

(LRV = 53)



HRB 108

(LRV = 19)

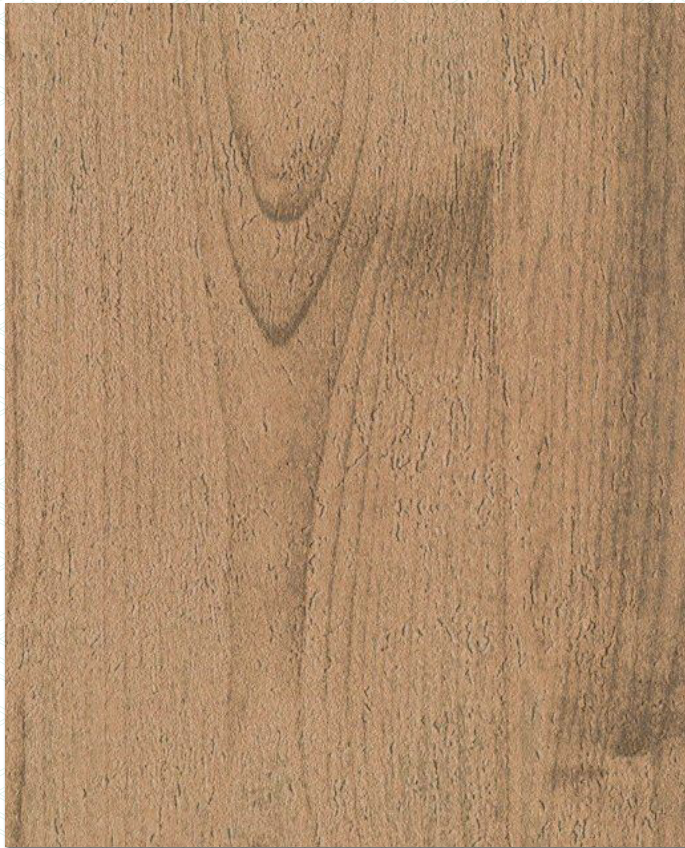


HRB 116

(LRV = 10)

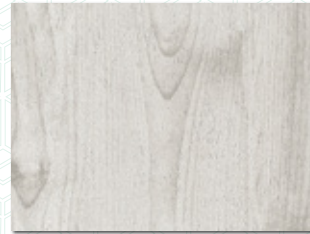


# ARBOUR



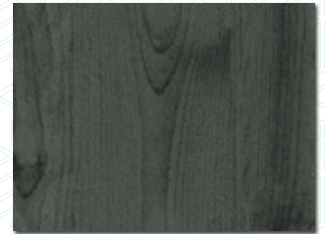
ARB 005

(LRV = 50)



ARB 002

(LRV = 72)



ARB 008

(LRV = 18)



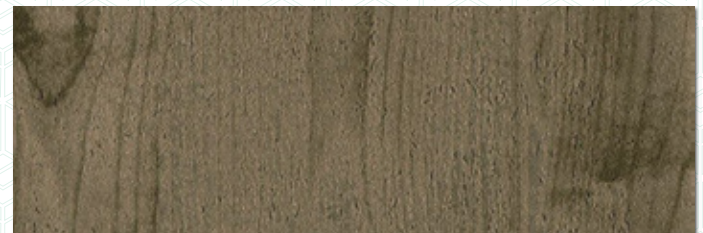
ARB 007

(LRV = 33)



ARB 003

(LRV = 24)



ARB 004

(LRV = 18)

# MARRAKESH/BARK



MAR 006

(LRV = 18)



MAR 001

(LRV = 49)



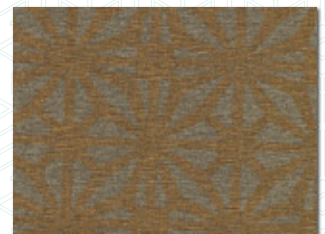
MAR 004

(LRV = 52)



MAR 008

(LRV = 20)



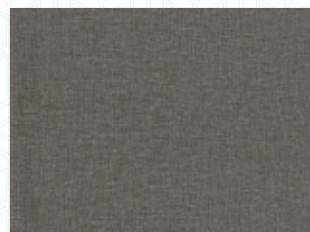
MAR 005

(LRV = 30)



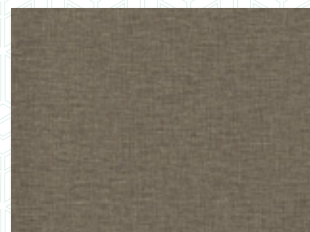
MAR 007

(LRV = 63)



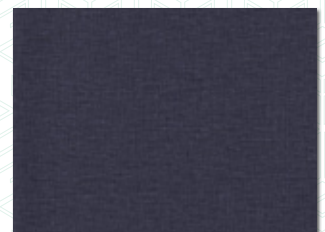
VBK 124

(LRV = 29)



VBK 104

(LRV = 26)

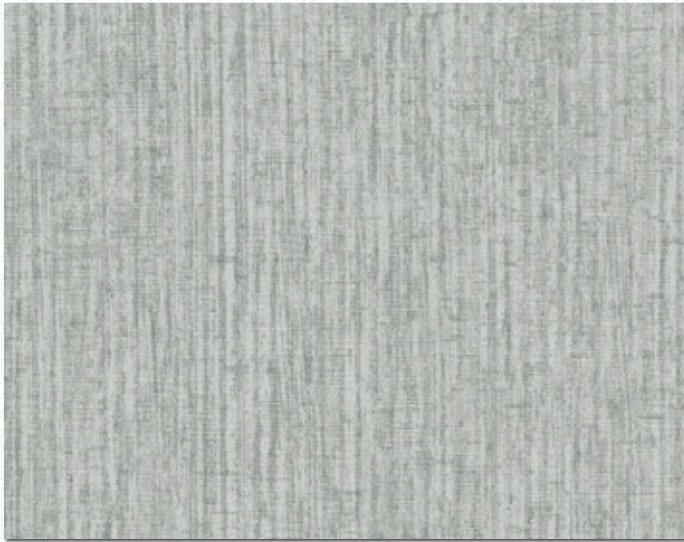


VBK 102

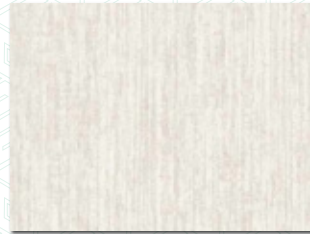
(LRV = 12)



# ZENITH



15.1005



15.1001



15.1006



15.1002



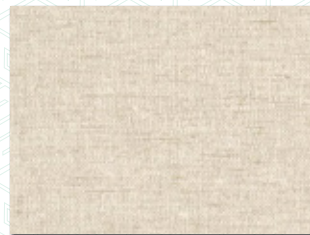
15.602



15.1105



15.705



15.802



15.906

# KOTA SILK



KOT 19

(LRV = 49)



KOT 22

(LRV = 78)



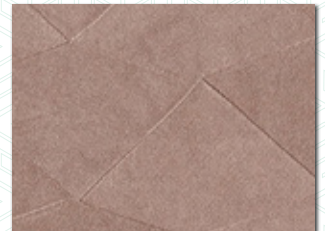
KOT 01

(LRV = 59)



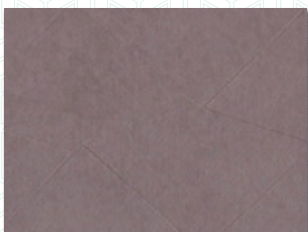
KOT 23

(LRV = 52)



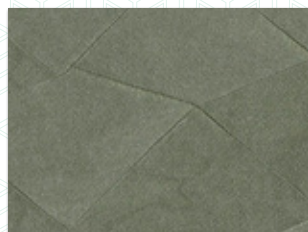
KOT 07

(LRV = 43)



KOT 03

(LRV = 33)



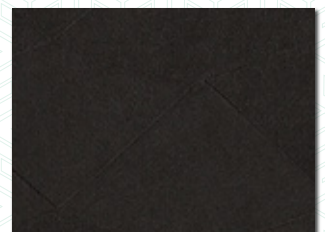
KOT 20

(LRV = 32)



KOT 24

(LRV = 16)



KOT 05

(LRV = 5)



# KENSINGTON TELA II



KEN 001

(LRV = 79)



KEN 002

(LRV = 45)



KEN 003

(LRV = 51)



KEN 004

(LRV = 48)



KEN 005

(LRV = 22)



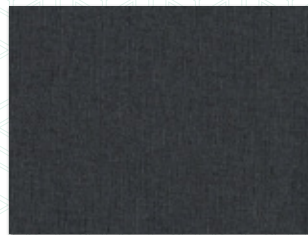
TEL105

(LRV = 67)



TEL127

(LRV = 73)



TEL118

(LRV = 8)



TEL131

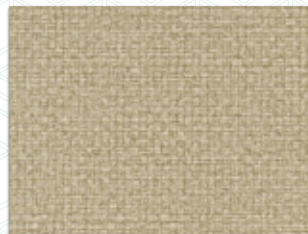
(LRV = 13)

# RAFFIA



RAFF 001

(LRV = 25)



RAFF 002

(LRV = 43)



RAFF 003

(LRV = 26)



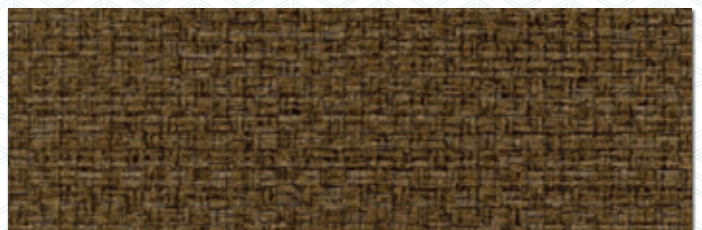
RAFF 004

(LRV = 29)



RAFF 005

(LRV = 21)



RAFF 006

(LRV = 11)



	15oz	18oz	20oz
<b>TOTAL WEIGHT (g/m2)</b>	350	400	460
<b>VINYL WEIGHT (g/m2)</b>	260	310	460
<b>SUBSTRATE WEIGHT (g/m2)</b>	90	90	60
<b>TENSILE STRENGTH (N/cm)</b> MD	40	40	80
TD	30	30	60
<b>TEAR STRENGTH nM (average)</b>	4500	4500	8500
<b>LIGHT FAST</b>	Excellent Light Fastness BS EN ISO 105-B02 7/8		
<b>ROLL SIZE</b>	130x 30m - cut lengths available		
<b>SPECIFICATION</b>	Conforms to requirements of BS EN 15102, BS EN 259 and WA – Quality Standard W-101.		

**FIRE RATED (15oz)**  
Class A ASTM E-84 Tunnel test.

**Light Reflective Value (LRV)**  
Available on request.  
In architecture, light reflectance value, is a Measure of visible and usable light that is reflected from a surface when illuminated by a light source.

**Stain/Chemical Resistance:**  
Pass ASTM D-1308-1987 Federal Spot Test.  
Resistant to temporary staining of oils, fats, mild acids and alkalis.

**Quality Assurance:**  
Our management systems and production procedures comply with ISO 9001:2015, the internationally recognised Quality Standard.

**Maintenance:**  
Fully washable and in most cases products can be scrubbed repeatedly to remove any marks without damaging the product itself. Also able to withstand the use of chlorine releasing agent solutions.

**Warranty:**  
Newmor offers a five-year warranty against manufacturing defects. Full details available on application.

Product Warranty:  
Newmor Manufacturer, warrants that for a period of five from the installation of its commercial wallcoverings, they shall not separate from their backings or support the growth of mildew when wallcoverings are installed properly onto a sound surface, adequately maintained and used under normal conditions. The warranty is not assignable and extends only to purchasers who are the owners of wallcoverings at the time of installation. The manufacturer will supply replacement wallcoverings free of charge if any of its wallcoverings fail to conform to this warranty.

